

ÜBERSICHTSZEICHNUNG ASSEMBLY DRAWING

LAPIERRE



Overvolt HT 7.5 / 5.5 / 5.4 (MY21)

Datum: 24-08-2020

Version: 02



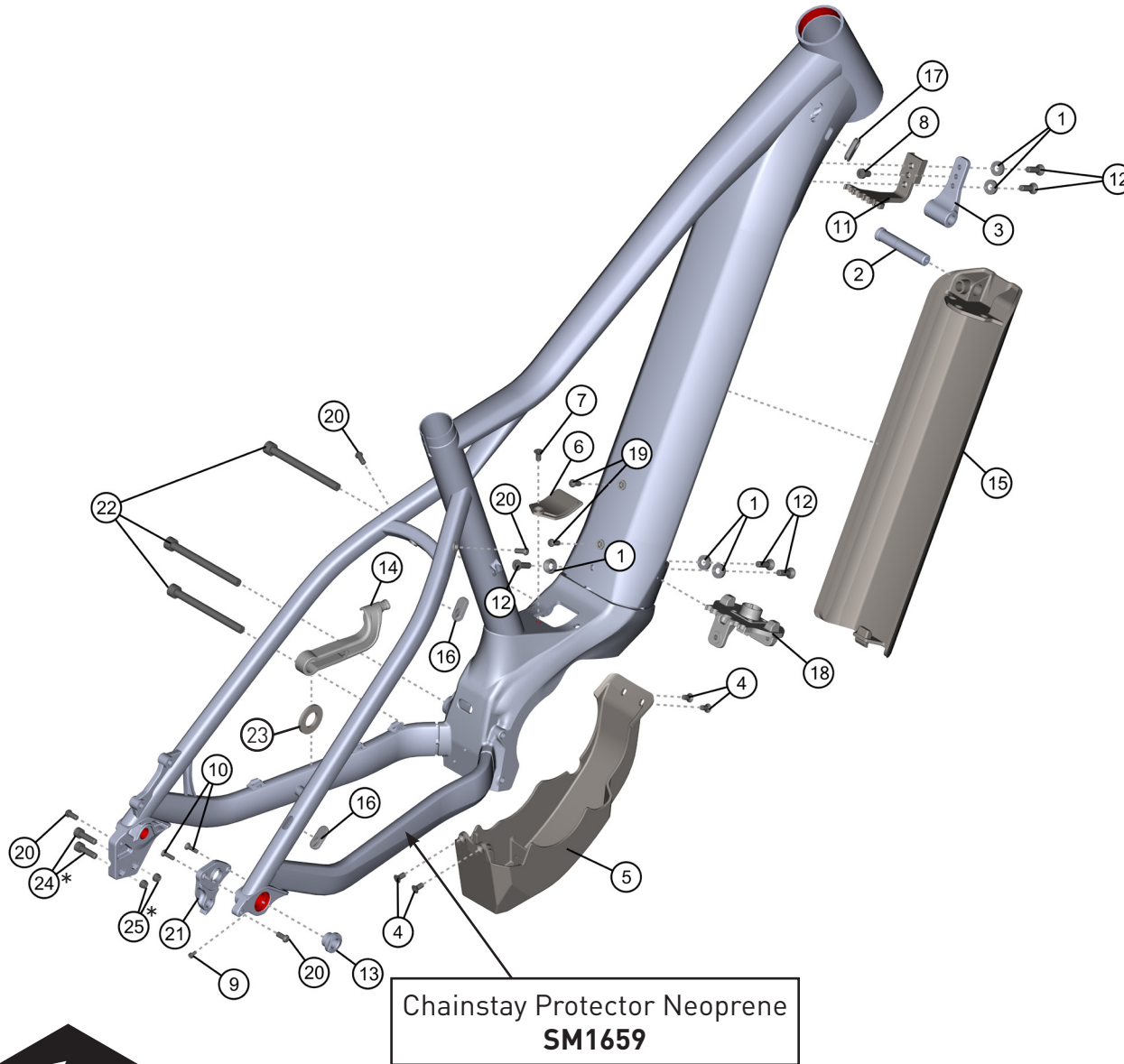
Overvolt HT 7.5 / 5.5 / 5.4 (MY21)

date: 24-08-2020

version: 02

ÜBERSICHTSZEICHNUNG ASSEMBLY DRAWING

LAPIERRE



Hinweis: Bei den Schrauben muss mittelfeste Gewindesicherung verwendet werden.
Rote Flächen müssen gefettet werden.

Note: use medium strength screw lock for screw threads.
red surfaces has to be greased.

FACT SHEET:	
SHOCK LENGTH:	-----
SHOCK HARDWARE:	
TOP:	-----
BOTTOM:	-----
HEADSET:	
TOP:	ZS 44
BOTTOM:	ZS 56
SEATPOST DIAMETER:	31.6 MM
CLAMP INNER DIAMETER:	34.9 MM
BOTTOM BRACKET:	-----
KICKSTAND:	KSA 18
ISCG STANDARD:	-----

Overvolt HT 7.5 / 5.5 / 5.4 (MY21)
date: 24-08-2020
version: 02



ÜBERSICHTSZEICHNUNG

ASSEMBLY DRAWING

LAPIERRE

BOM-ID	Description	Specification	Torque	Drawing no. supplier	Item no.	QTY
1	Spacer	Ø 15 x 4 mm		7764-02001-0043	FROT0143	5
2	Battery lock axle	T40 - Ø 14 (M12) x 66 mm	10 Nm	7289-02013-0948	FROT0144	1
3	Battery cover mount			7134-07009-0945	FROT0145	1
4	Counter sunk screw	Hex 3 - M5 x 10 mm	6 Nm		FRSC0086	4
5	PW-ST Motor Cover			WI-38L-105	FROT0085	1
6	PW-ST BB Top Cover			WI-38L-106	FROT0086	1
7	Counter sunk screw	Hex 3 - M5 x 10 mm	6 Nm		FRSC0086	1
8	Hexagon socket screw	Hex 5 - M6 x 10 mm	11 Nm	7596-08002-0930	FRSC0080	1
9	Hexagon socket screw	Hex 2,5 - M3 x 5 mm	1 Nm	7596-08010-0707	FRSC0081	1
10	Counter sunk screw	Hex 2,5 - M4 x 12 mm	3 Nm	7596-08008-0009	FRSC0082	2
11	DT cable guide			7134-34001-0003 (WI-38L-62)	FROT0146	1
12	Counter sunk screw	Hex 4 - M6 x 20 mm	11 Nm	7596-08006-0802	FRSC0083	5
13	Hanger Nut	Ø 21 (M12) x 11,9 mm		7763-02001-0108	FROT0152	1
14	Sensor holder			WI-38L-42	FROT0088	1
15	Battery cover			7638-16004-0004 (WI-38L-94)	FROT0153	1
16	Cable guide SW-415			7665-07002-0001	FROT0154	2
17	Cable guide YF-W13-1			7664-01027-0004	FROT0155	1
18	Battery Connector			7134-34001-0004 (WI-38L-93)	FROT0157	1
19	Lens head screw	T25 - M5 x 10 mm	6 Nm	7596-01001-0133	FRSC0087	2
20	Lens head screw	T25 - M5 x 10 mm	6 Nm	7596-08004-0915	FRSC0088	4
21	Hanger			7634-01017-0808	FROT0156	1
22	Hexagon socket screw	Hex 6 - M8 x 65 mm	28 Nm		FRSC0066	3
23	Spacer for sensor			7764-02001-0041	SM1743	1
24*	Hexagon socket screw (for kickstand)	Hex 4 - M5 x 20 mm	6 Nm	Würth	SM1229	2
25*	Self locking nut (for kickstand)	M5		Würth	SM1238	2



Overvolt HT 7.5 / 5.5 / 5.4 (MY21)

date: 24-08-2020

version: 02